



BE Systems

Affordable housing 2019



BE Systems **RVW** WORKS

OTHER PROJECT PARTNERS:

TNO innovation for life

IDEAL
TOUCH LTD.



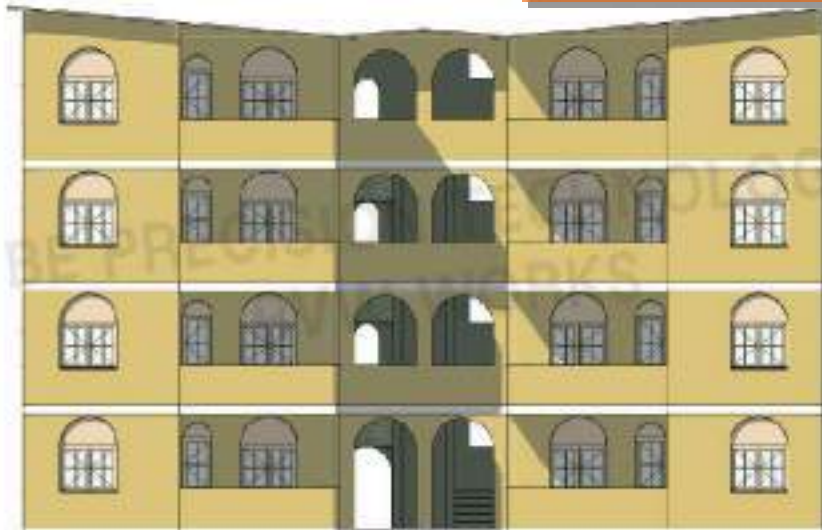
DESIGN CONCEPT



DESIGN CONCEPT



Larger scale



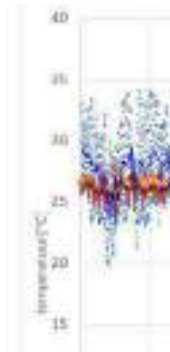
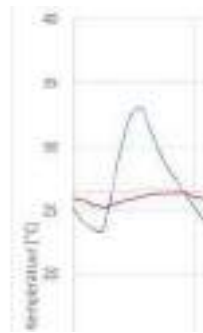
A1-FE

Front elevation

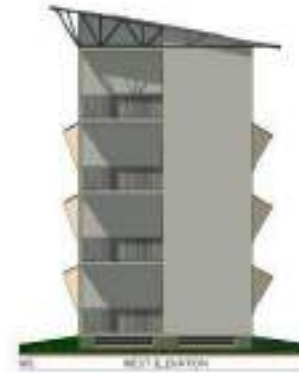
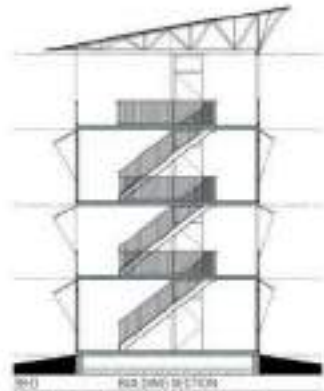
1:100



NL Technology no aircondition



Mass production , low cost housing



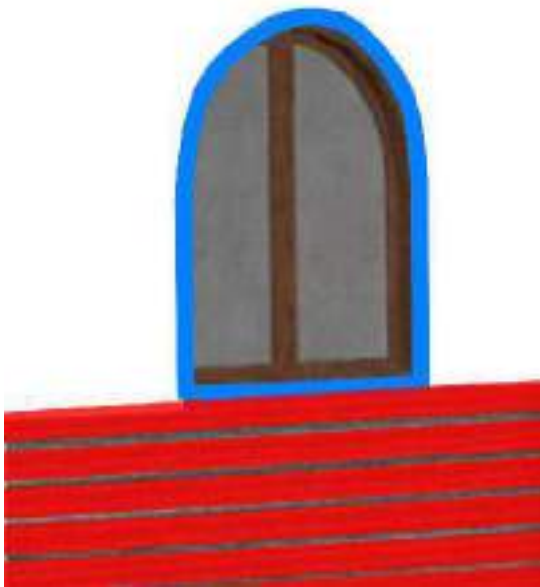
3D buidings



PRINTING THE LAYERS OF CONCRETE AGAINST THE WINDOW OR DOOR FRAMING

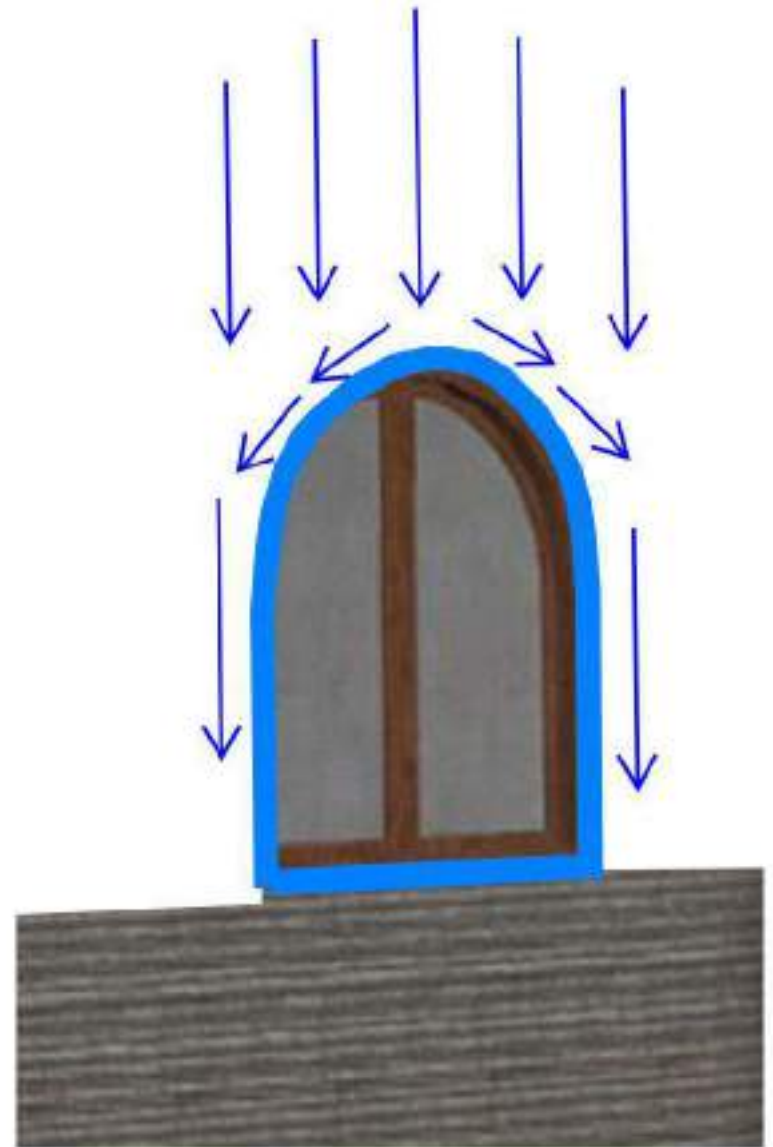
Frames/doors/windows can be PRINTED WITH plastics or woodvibers

INTEGRATION OF FRAMING



FORCES

- Why are the windows rounded?
- Why do we need a 'pulling force free' construction



CONCRETE MIXTURES



Reinforced concrete
(traditional, not printable)



Thixotrope mixture
Printable concrete



Thixotrope mixture
Reinforced with fibers
Printable concrete

3D PRINTER



- Colored material possible
- Unlimited shapes



3D PRINTER

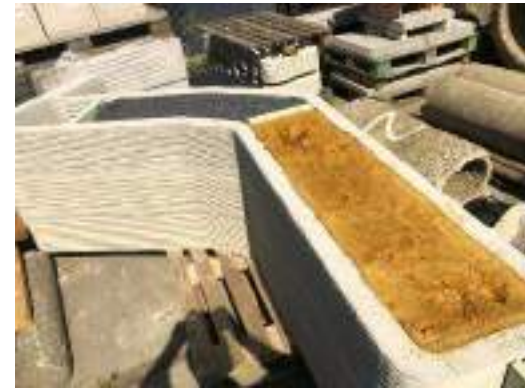


- Rock solid and fast mfg method
- Very little personal needed
- Straight wall with round corners

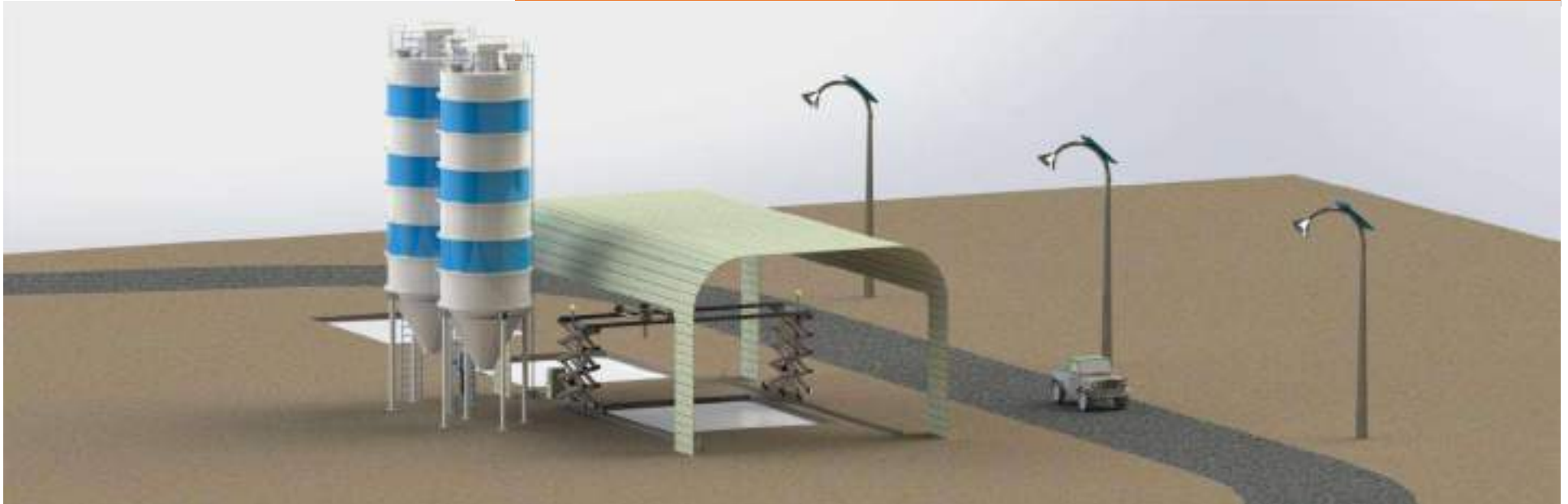


3D PRINTER

- Other projects



3D PRINTER



- PRINTER MODULAR
- PROGRAMMING SHAPES
- EASY MULTIPLY
- Sustainable / recycling in case EOL
- Printer fits in container
- Can be shipped to any place in the world
- Onsite training and support



3D PRINTER



- PROGRAMMING SHAPES
- EASY MULTIPLY
- Printer fits in container
- PRINTER could be shipped to any place in the world

Together we make the future